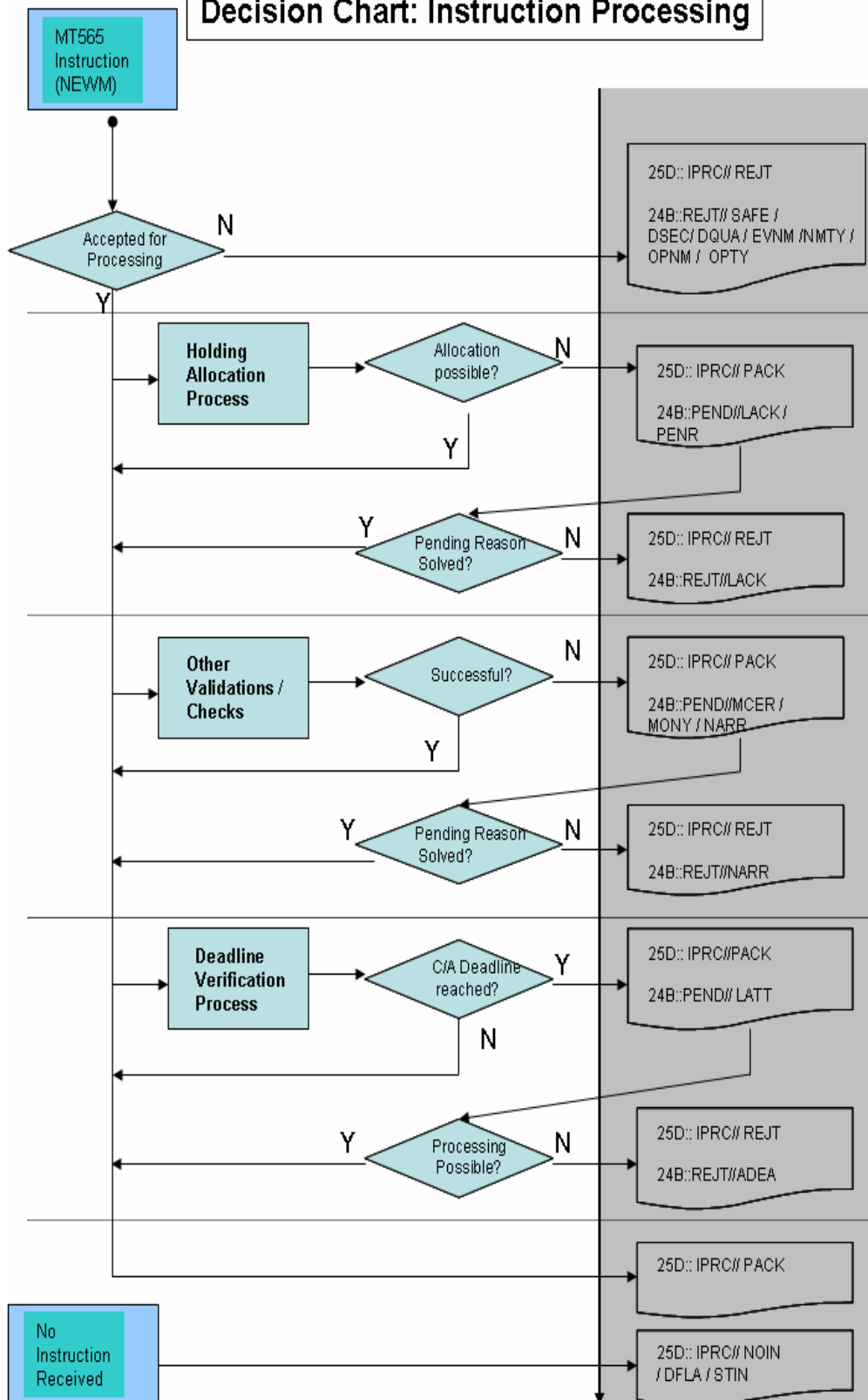
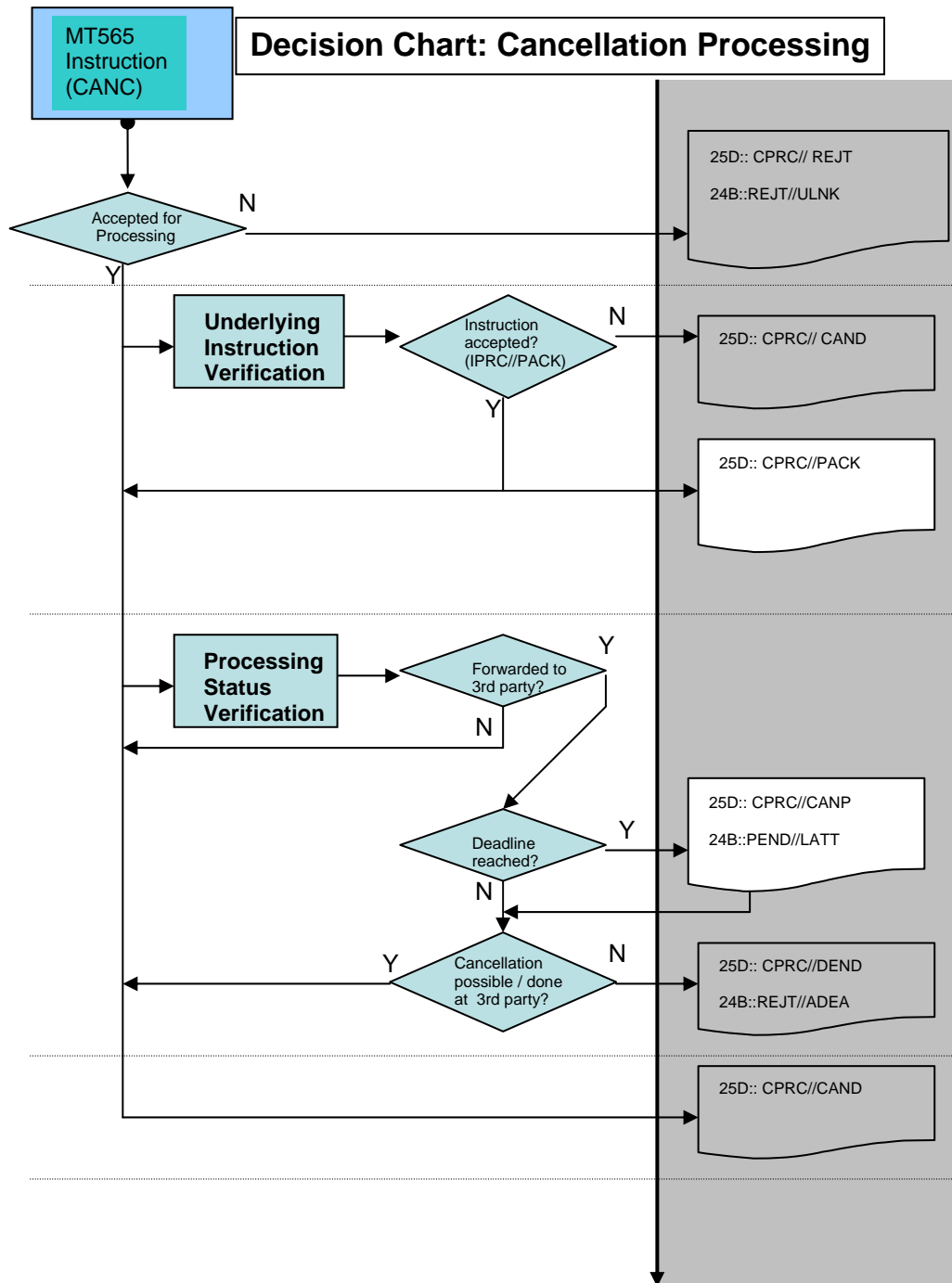


Decision Chart: Instruction Processing



Note:
- the different processes may run in different order or in parallel



Note:

- Optional status/reason codes are shown with white background
- the usage of additional rejection reasons (SAFE/DSEC/DQUA/EVNM/NMTY/OPNM/OPTY) is allowed but not considered necessary
- the transmission of an additional MT567 to indicate that the underlying instruction has been cancelled (IPRC//CAND) or is not possible to be cancelled (IPRC//IPNC) is possible but not recommended
- the usage of reason code Narrative is not recommended but can be used in specific instances